

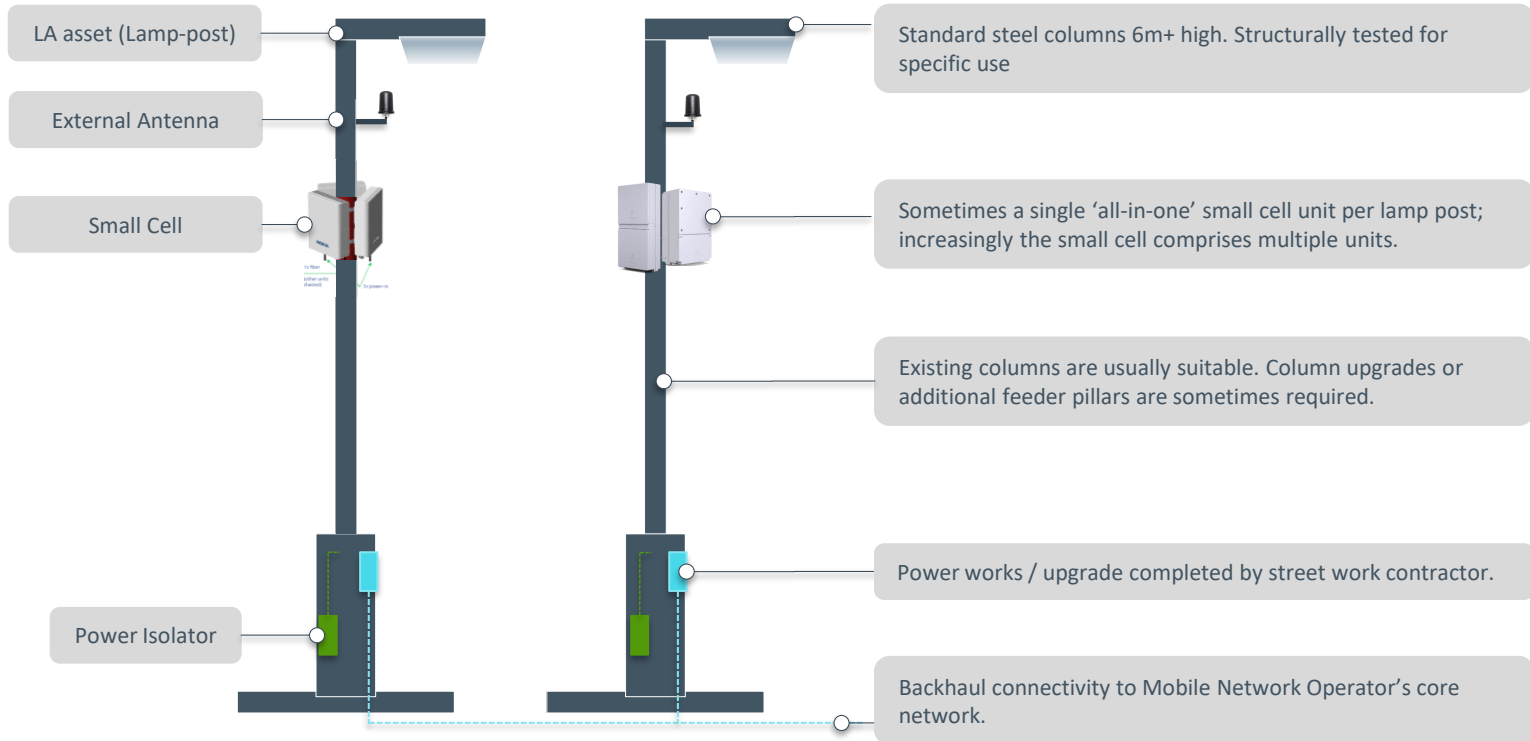


Small Cells Equipment and Deployment Examples

Mobile Network Operators are looking to deploy both 4G and 5G Small Cells in densely populated areas where there are coverage or capacity challenges. This guide provides examples of designs and technologies being deployed.

Small Cells - Deployments

Small cells come in various combinations depending on the configurations and technologies required. Below are some examples of Small cell deployments on local authority assets and the typical equipment used.



Small Cells – Typical Deployments

4G Small Cell



New 4G/5G Small Cells

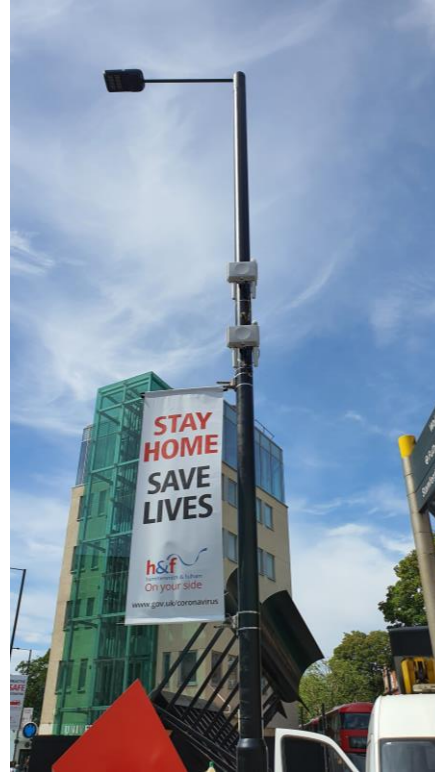


Small Cells – Typical Deployments

Single Operator Installations



Multiple Operator Installations

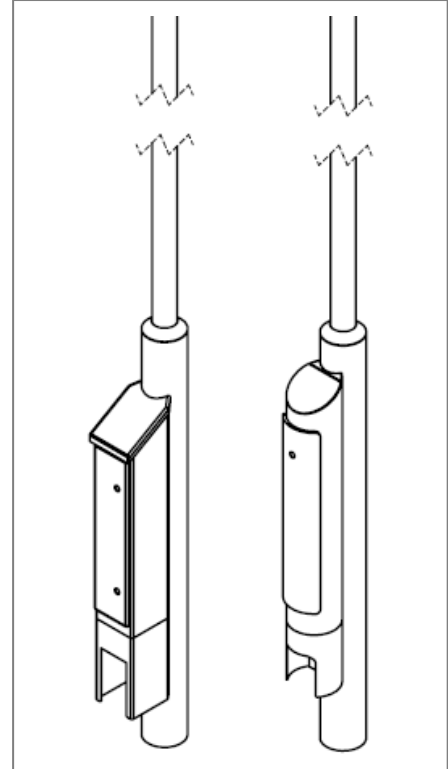


Small Cells – Typical Deployments

Internal Electrical Distribution



Feeder Pillars



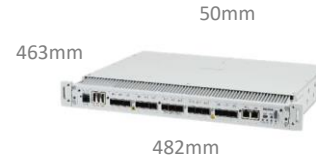
Small Cells – Typical Equipment



- Single Radio unit supporting LTE only
- External antenna required which can be Omni or directional
- 6.1kg, AC or DC power



- Single Radio Unit supporting 5G only
- Requires separate power supply
- External antenna feed
- 11kg, AC or DC power



- Base band that connects the radio units
- Installed band-to-back with the Radio units
- VDC only
- 9.3kg weight



- Different antenna options with max weight 5.5kg
- Optional GPS antenna maybe required at some sites
- No power required

Small Cells – Typical Equipment



- Single Radio unit supporting LTE only
- External antenna required which can be Omni or directional
- 6.5kg, AC or DC power



- LTE Radio unit stacked with 5G unit
- Both units require separate power supply
- 11.5kg total weight
- AC or DC power



- Base band that connects the radio units
- Installed band-to-back with the Radio units
- Separate Power supply
- 12kg weight



- Different antenna options with max weight 5.5kg
- Optional GPS antenna maybe required at some sites
- No power required

Thank you

For further info, contact us on
info@cellnextelecom.co.uk