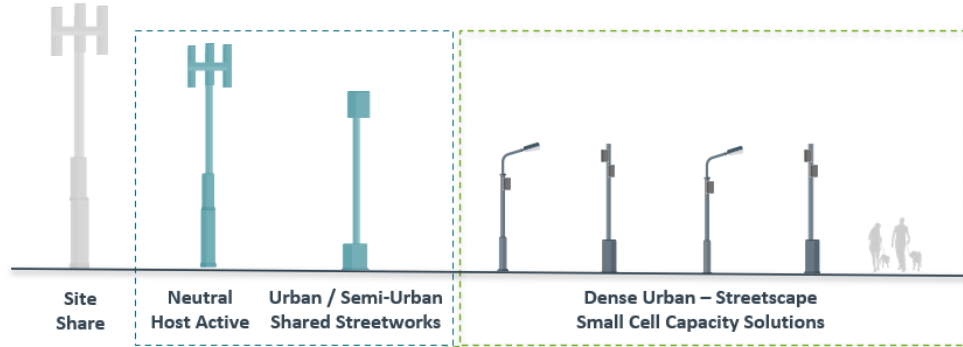


We offer a range of Small Cell solutions;
including Hosted Location, Connected Location
and Street Poles.

Small Cells

Our Product and Solutions

Overview

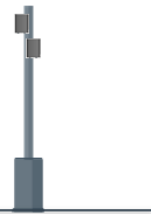


Dense Urban Solution – Small Cell Deployment

Hosted Location (HL)
L.A Asset

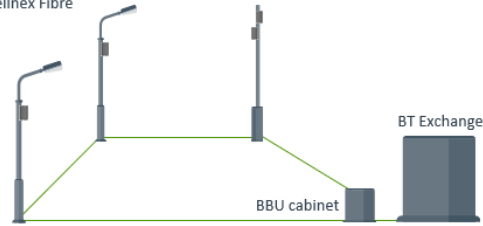


Street Poles (SP)
Cellnex Asset



Fibre Solutions

Connected Location (CL)
L.A/Cellnex Asset
Cellnex Fibre



Hosted Location - wide availability of LA assets to realise SC deployments for capacity challenges at street level.

Street Poles – new Cellnex-owned asset available for deployment in challenging areas, where LA assets are not suitable.

Connected Location – new Cellnex-owned Dark Fibre solution, providing backhaul connectivity to our Small Cell assets.

Small Cells

Tackling street level congestion

Cellnex provides the Small Cell assets, infrastructure and services to deliver coverage and capacity exactly where it's needed – at street level, in dense urban areas.

With demand for high bandwidth mobile services outstripping supply in many UK towns and cities, meeting user expectations now is a key challenge for Mobile Network Operators (MNOs).

Providing additional capacity in these hyper dense or unserved areas, and complementing current macro base stations deployments, Cellnex is your single Small Cells delivery partner. Our independent, neutral-host solution provides operators with the confidence of working with a trusted partner. The Cellnex end-to-end Small Cells deployment service is built on our rights to use street assets for communications equipment and removes the complexity involved in dealing with multiple parties, permitting, and traffic management.

In places where it's difficult for a macro to serve, Small Cells free up capacity on the macro and improves its performance. Experience has shown that Small Cells capture new traffic too, enhancing the customer experience and growing your market.

As the UK's largest independent telecoms infrastructure provider, Cellnex has access to many hundreds of thousands of street furniture assets across London and other urban areas. These include lamp posts, CCTV columns, and kiosks.

With new assets and locations becoming available all the time, it's easy to flex coverage and capacity as needed. And, with our neutral-host approach, MNO partners can access the assets on equitable terms and in the most cost-efficient way.

The Benefits

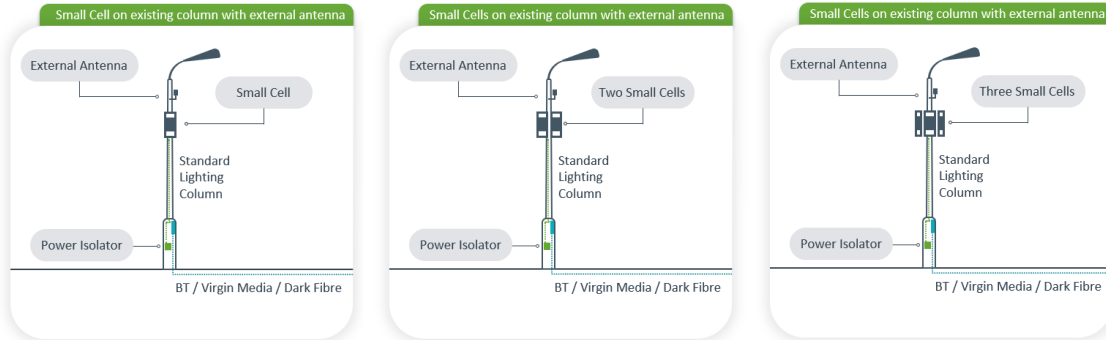
- Multi-operator neutral host solutions
- Purpose-built 4G/5G solution
- Flexible commercial models
- Relationship with Mobile Network Operators (MNOs)
- Fully managed service

Hosted Location

Cellnex Hosted Location enables Mobile Network Operators (MNOs) to enhance outdoor capacity and roll out 5G connectivity in built-up areas by placing Small Cells on street furniture – on CCTV columns, lamp posts, advertising hoardings, kiosks and more. This swift and simple alternative to building new towers or rooftop sites, delivers the coverage and capacity exactly where it is needed – at street level and with line of sight to mobile devices.

Our rights to use street assets for communications equipment, can give you access to many hundreds of thousands of locations in dense urban environments. We take care of structural approvals, power connection and install the Small Cell equipment. All operational sites are fully supported by our service desk.

The result is the smooth, efficient provision of the network you need, where you need it. With new assets and locations becoming available all the time, it's easier than ever to solve capacity pinch points.



Connected Location

Providing a “one-stop-shop” for small cells, Cellnex’ Connected Location proposition offers MNOs a combination of asset, power, and connectivity – all in one place.

As demand for 5G continues to gather pace, small cell access nodes offer the capacity and coverage needed to ensure that urban locations can be adequately served.

Each of those nodes, of course, requires three things in order to operate: an asset (such as a lamppost), power, and connectivity. To date, the last of these has been provided as an ethernet circuit using traditional providers.

At Cellnex UK, we’re keen to ensure that our MNO partners have the flexibility to choose the best approach for their business and customers. That’s why, with the introduction of Connected Location, we will combine our market leading street asset portfolio with a futureproofed connectivity solution into a “one-stop-shop” for small cell deployment programmes.

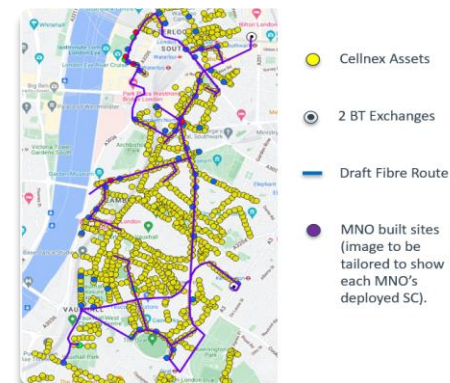
Essentially removing the backhaul burden from MNOs, Connected Location instead allows Cellnex UK to meet that requirement using a dark fibre solution. To deliver on this, we’re partnering with a number of fibre providers to offer connectivity across their aggregated network.

Not only does Connected Location create a standardised solution that can be replicated across London boroughs and other cities, it offers a neutral host, shared platform that multiple MNOs will be able to utilise in order to reduce the total cost of ownership, whilst decoupling future increases in capacity demand from rises in the cost of transmission.

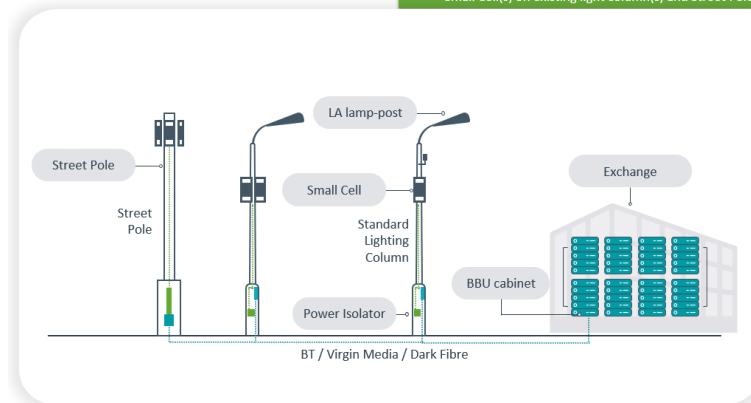
Enabling the C-RAN architecture that will enable 5G to flourish, Connected Location comes with added benefits in the form of technology futureproofing; dark fibre costs remain the same no matter the bandwidth required, and provide a long-term 5G solution, one that can handle backhaul, fronthaul, low latency, and C-RAN.

Our solution will deliver connectivity back to where you need it, and will include a location to house base band units as required.

Connected Location represents a significant step on our small cell journey, one that will help us speed up delivery and ensure that we can provide high-bandwidth C-RAN support where MNOs need it most.



Small Cell(s) on existing light column(s) and Street Pole



Street Pole

In our continuing commitment to better connectivity - We've noted MNO ambitions to deploy streetscape small cells into large towns and cities and understand the challenges that some Local Authority assets are unsuitable to use. The answer – Cellnex Street Poles.

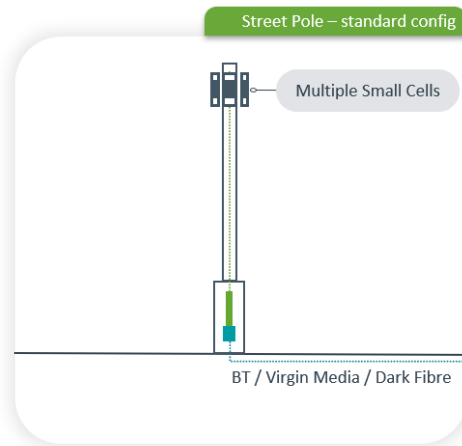
The solution starts with us building on our strong relationships with Local Authorities to submit and proactively work through the planning process for new pole locations. Our approach, we believe, has a number of advantages:

Ease of planning – We've made a conscious strategic decision to deploy familiar street furniture solutions that are typical in the streetscape and routinely used for other purposes. We believe this plays a significant role in smoothing the planning process as our poles are less visually obtrusive and more cost-effective than some of the 'funkier' alternatives often referred to as "smart poles".

Cellnex owned – Once granted planning permission, Cellnex UK builds, owns, manages and controls the structure. You'll be working with Cellnex UK, not the individual authorities, having one single point of contact.

Better power SLAs – Cellnex UK Street Poles will be metered, rather than council power supplied. This means fewer interruptions in power and service provision, and ensures fast remedial action. Our engineers will be able to restore power outages in a matter of days, rather than weeks or even months.

Hassle-free upgrades – Our solution to increase signal coverage and capacity at street level has built-in flexibility. Our Street Poles can host 4G and 5G equipment, and a second or third small cell can be easily added without further approvals. As a neutral host, we can accommodate multiple operators and can support C-RAN architecture, traditional all-in-one small cells, or a combination of both.



Thank you

For further info, contact us on
info@cellnextelecom.co.uk